

# Challenges and Opportunities

March 27, 2013

Kirk T. Steudle, P.E.  
Director



Customer Survey: [www.mi.gov/mdot](http://www.mi.gov/mdot)



# Governor Snyder's State of State



**January 16, 2013**

<http://www.michigan.gov/snyder>

# PERFORMANCE & ACCOUNTABILITY

- Michigan Dashboard
- Infrastructure Dashboard
- MDOT's Scorecard
- MDOT System Measures
- Asset Management Council
- FHWA Stewardship Agreement
- Good Government in Action

## Infrastructure Dashboard

### Performance Key:

- 👍 Performance improving
- = Performance staying about the same
- 👎 Performance declining

Click on the links in the table below for more detail.

Economic Growth				
	Prior	Current	Progress	
Commercial vehicle traffic in billions of miles	5.74 (2010)	5.74 (2011)	=	
Rail freight traffic in millions of tons	52.7 (2009)	60.4 (2010)	👍	
Percentage of households with broadband	n/a	67% (2010)	n/a	
Percentage of U.S. trucking trade traffic through Michigan international borders	45.7% (2010)	44.9% (2011)	👎	

Safety				
	Prior	Current	Progress	
Individuals fatally or seriously injured in traffic accidents	6,917 (2010)	6,595 (2011)	👍	
Work zone injuries and fatalities	108 (2010)	106 (2011)	👍	
Monitored beaches with no closures or unsafe advisories	72% (FY 2011)	76% (FY 2012)	👍	

Accountability				
	Prior	Current	Progress	
Percentage of road construction projects completed:				
- On time or ahead of schedule	97.2% (2009)	99.6% (2010)	👍	
- Within 5% of budget or less	72.7% (2009)	77.8% (2010)	👍	



Mobility				
	Prior	Current	Progress	
Percentage of traffic incidents cleared in less than 2 hours	88.0% (Nov 2011)	91.5% (Nov 2012)	👍	
Passenger air service in and out of Michigan in millions of passengers	37.0 (2010)	37.2 (2011)	👍	
Percentage change in passenger rail ridership	8.7% (2010)	7.8% (2011)	👎	
Percentage change in bus ridership	-3.65% (2010)	2.3% (2011)	👍	

Conditions				
	Prior	Current	Progress	
Percentage of structurally deficient bridges	13.15% (2010)	11.76% (2011)	👍	
Percentage of roads in good or fair condition in the paved federal aid system	65.2% (2010)	64.9% (2011)	👎	
Number of dam failures	2 (2011)	3 (2012)	👎	
Raw sewage discharge in billions of gallons	2.45 (2010)	7.90 (2011)	👎	

[www.michigan.gov/midashboard](http://www.michigan.gov/midashboard)  
[www.michigan.gov/mdot](http://www.michigan.gov/mdot)

# SAVING MONEY

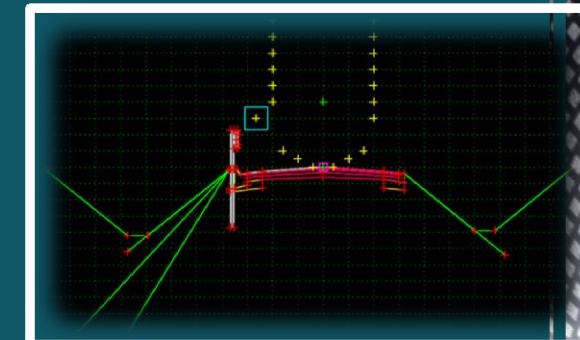
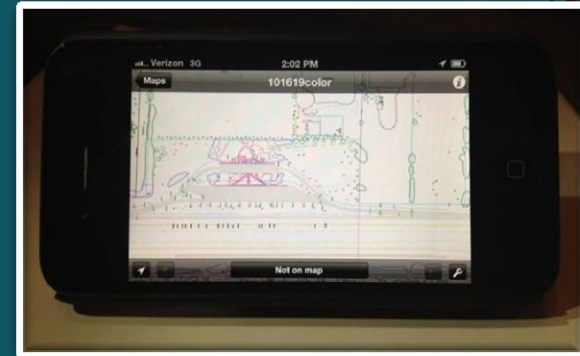
- Major reorganization and innovative cost-saving measures saved \$55 million in 2011 and \$16 million in 2012
  - Asset management
  - Energy efficiency
  - Performance measures
  - Construction warranties
  - Innovative contracts
  - Innovative finance
  - New technologies
  - Partnerships





# NEW INITIATIVES

- E-Construction Pilot Contracts using Technology
  - 3D Modeling allows contractors to use GPS for machine grading
  - Electronic bidding saves time & money, reduces errors, eliminates 10,000 pieces of paper per bid
  - I-96 / Latson Road estimates \$100,000 in savings
  - E-Sign technology eliminates 7.4 million sheets of paper & saves \$4M a year
- Strongly embraced performance measures as a tool to drive daily business decisions



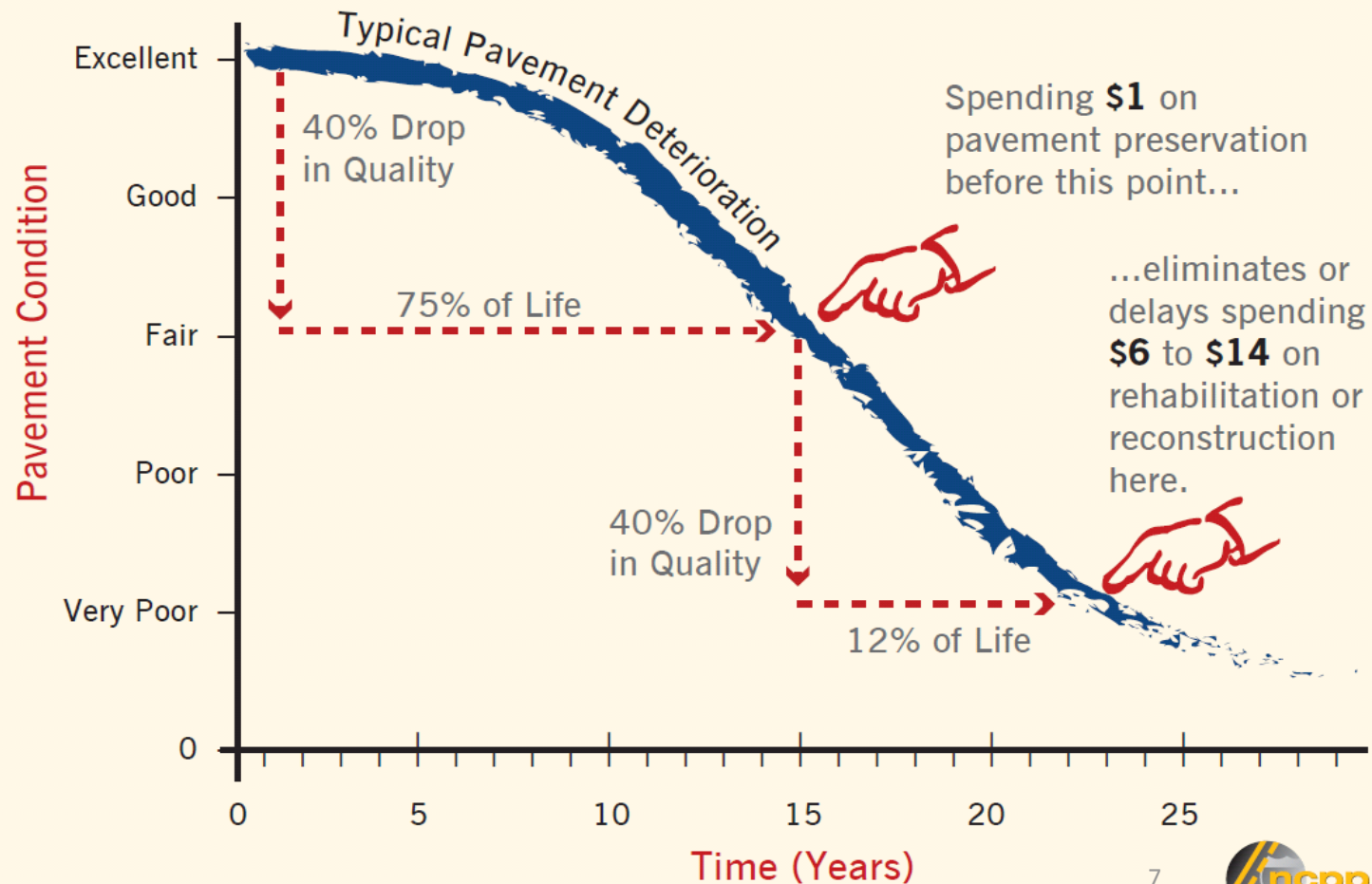
# CONSTRUCTION PROGRAM MANAGEMENT

**Six Year Summary of MDOT Projects**

<b>Calendar Year</b>	<b>Original Contract Cost</b>	<b>Final Contract Cost</b>	<b>Percent Difference</b>
2007	\$777,582,980.29	\$810,428,814.94	4.22%
2008	\$967,285,996.11	\$983,915,828.12	1.72%
2009	\$726,981,046.84	\$750,956,601.62	3.30%
2010	\$615,818,269.64	\$615,142,561.83	-0.11%
2011	\$833,072,906.02	\$842,999,015.92	1.19%
2012	\$771,130,483.23	\$768,530,401.94	-0.34%

# ASSET MANAGEMENT

## PAVEMENT PRESERVATION IS COST EFFECTIVE





# This is our goal...



**US-31 bridge in Beulah**



**I-75 in Saginaw**



**M-55 bridge over US-131 as it  
joins the Cadillac bypass**



**US-41 roundabout in Marquette**



# This is our reality...



**Plywood Under I-375 Bridge**



**Congestion at I-96 & US-23**

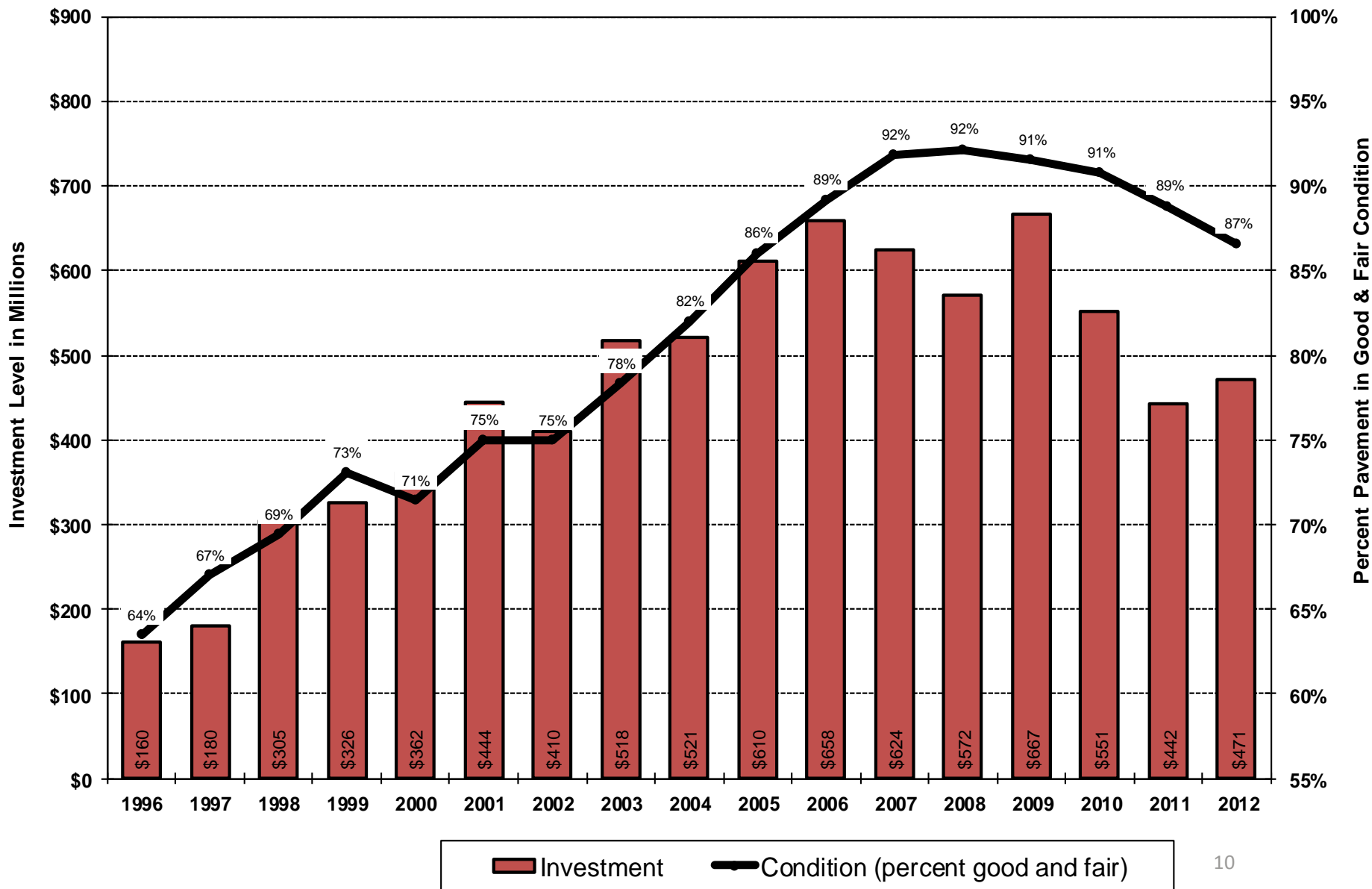


**Michigan pothole**

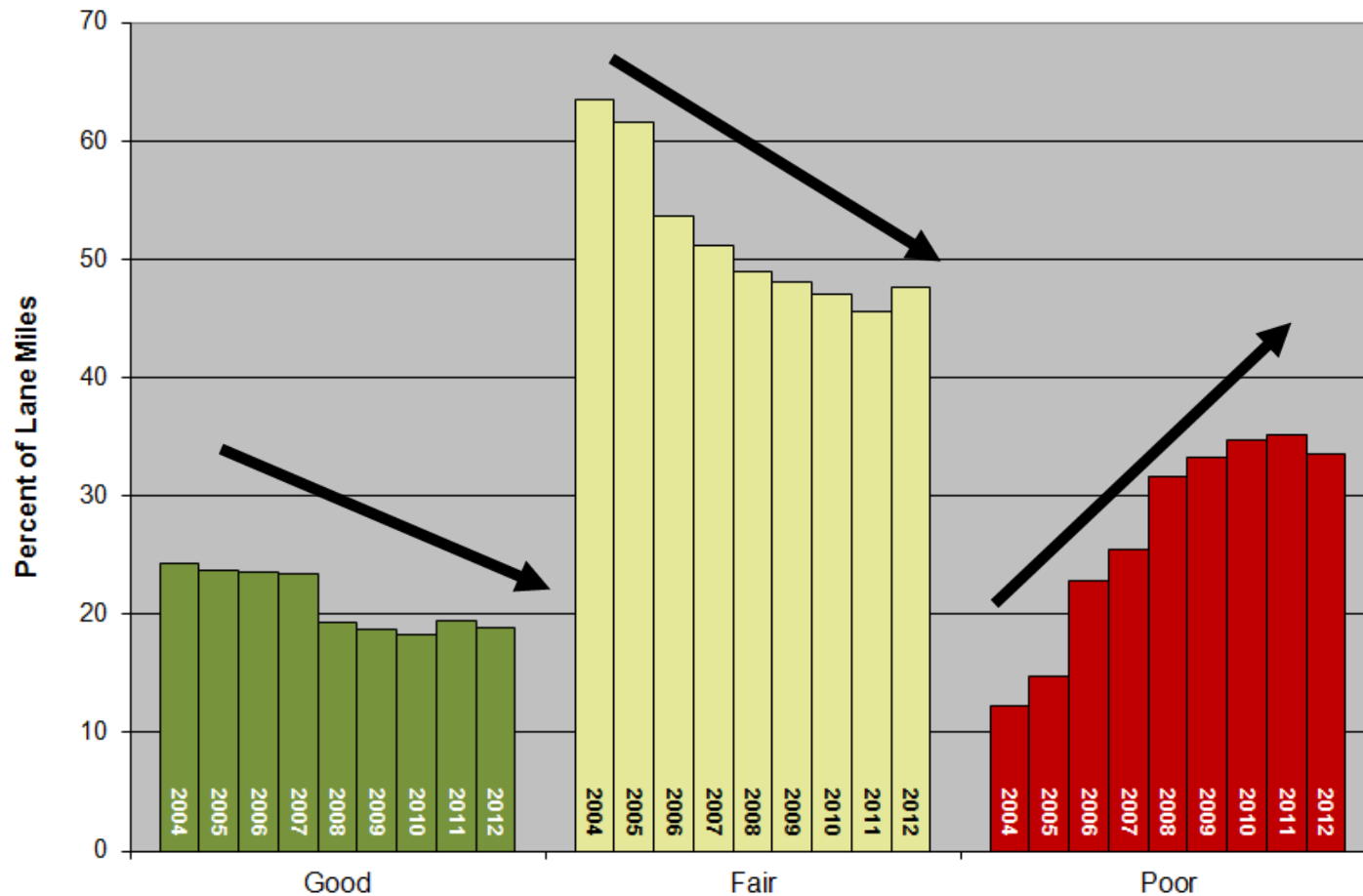


**Crumbling Five Mile Road bridge  
over I-275 in Livonia**

# PAVEMENT PROGRAM INVESTMENT LEVEL VS. ACTUAL TRUNKLINE PAVEMENT CONDITION

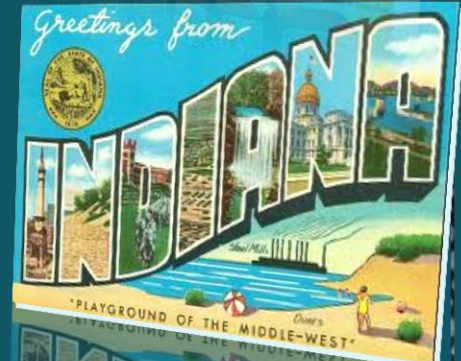
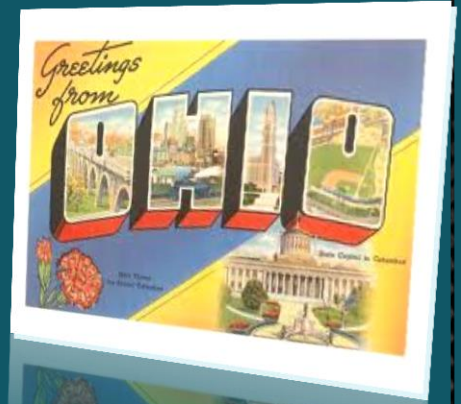
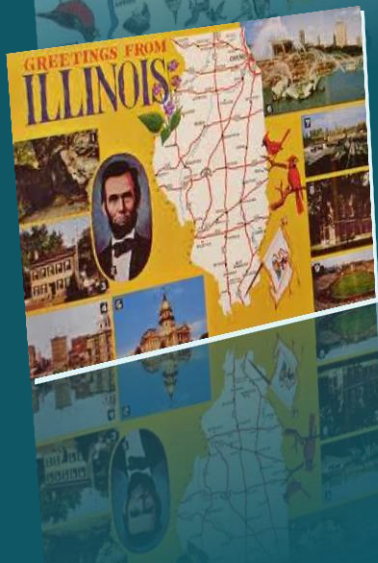
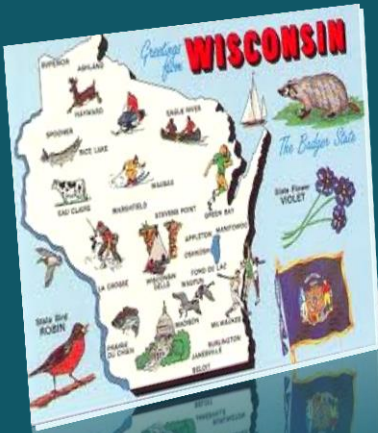


# What is the Condition of Michigan's Roads?





# How does Michigan compare?

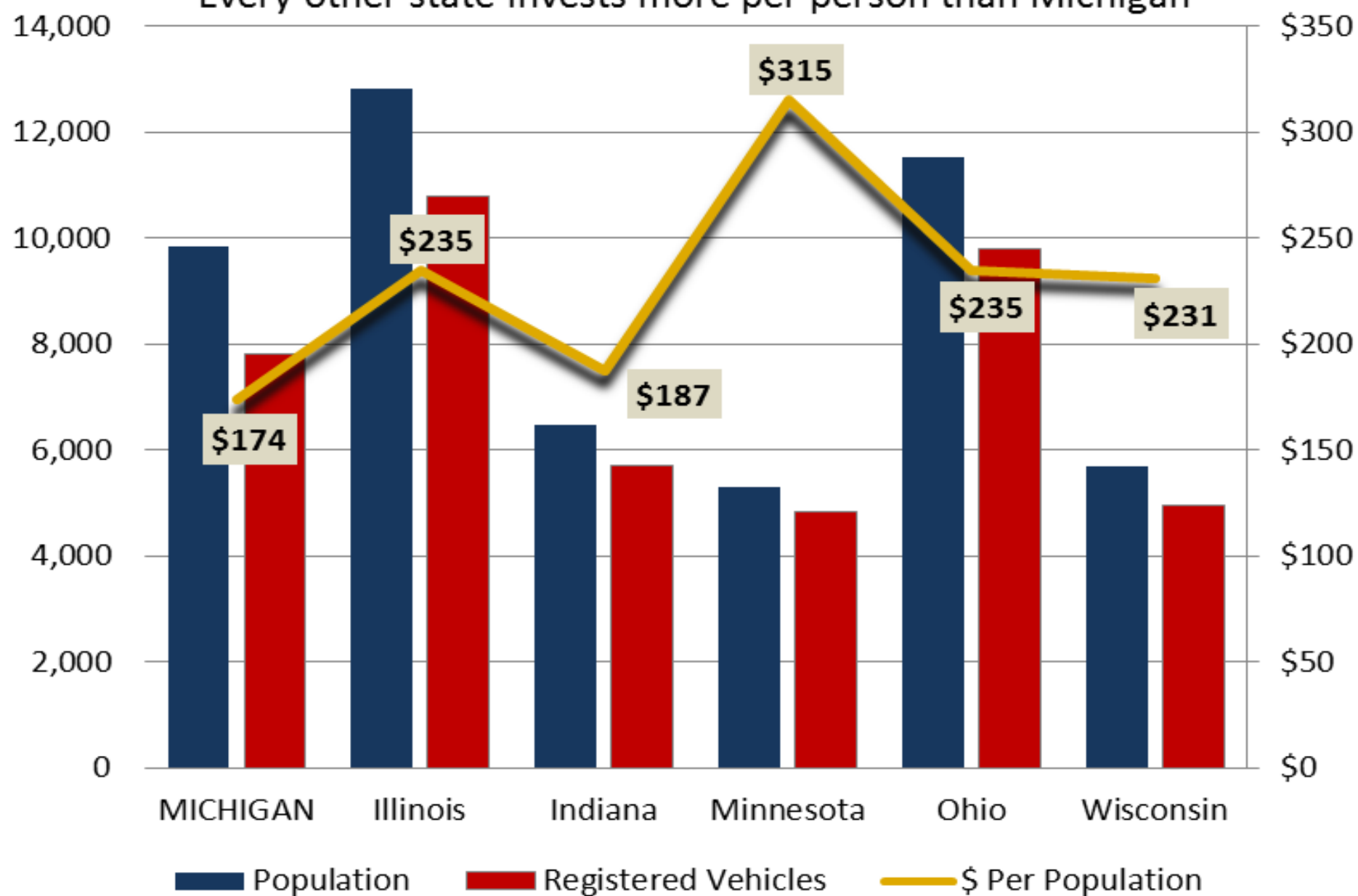


# REGIONAL COMPARISON

STATE	STATE PROFILE (thousands)				STATE INVESTMENT ALLOCATION (thousands)		
	Population	Registered Vehicles	Annual VMT	Lane Miles	Total Funding	Funding Per Pop.	Funding Per Lane Mile
MICHIGAN	9,834	7,822	97,567,000	257	\$1,709,199	\$174	\$6,651
Illinois	12,831	10,789	105,788,000	293	\$3,017,527	\$235	\$10,299
Indiana	6,484	5,698	75,761,000	200	\$1,215,322	\$187	\$6,077
Minnesota	5,304	4,848	56,632,000	284	\$1,672,190	\$315	\$5,888
Ohio	11,537	9,800	111,836,000	262	\$2,706,474	\$235	\$10,330
Wisconsin	5,687	4,968	59,420,000	237	\$1,315,897	\$231	\$5,552

# Population, Registered Vehicles, & Dollars Invested

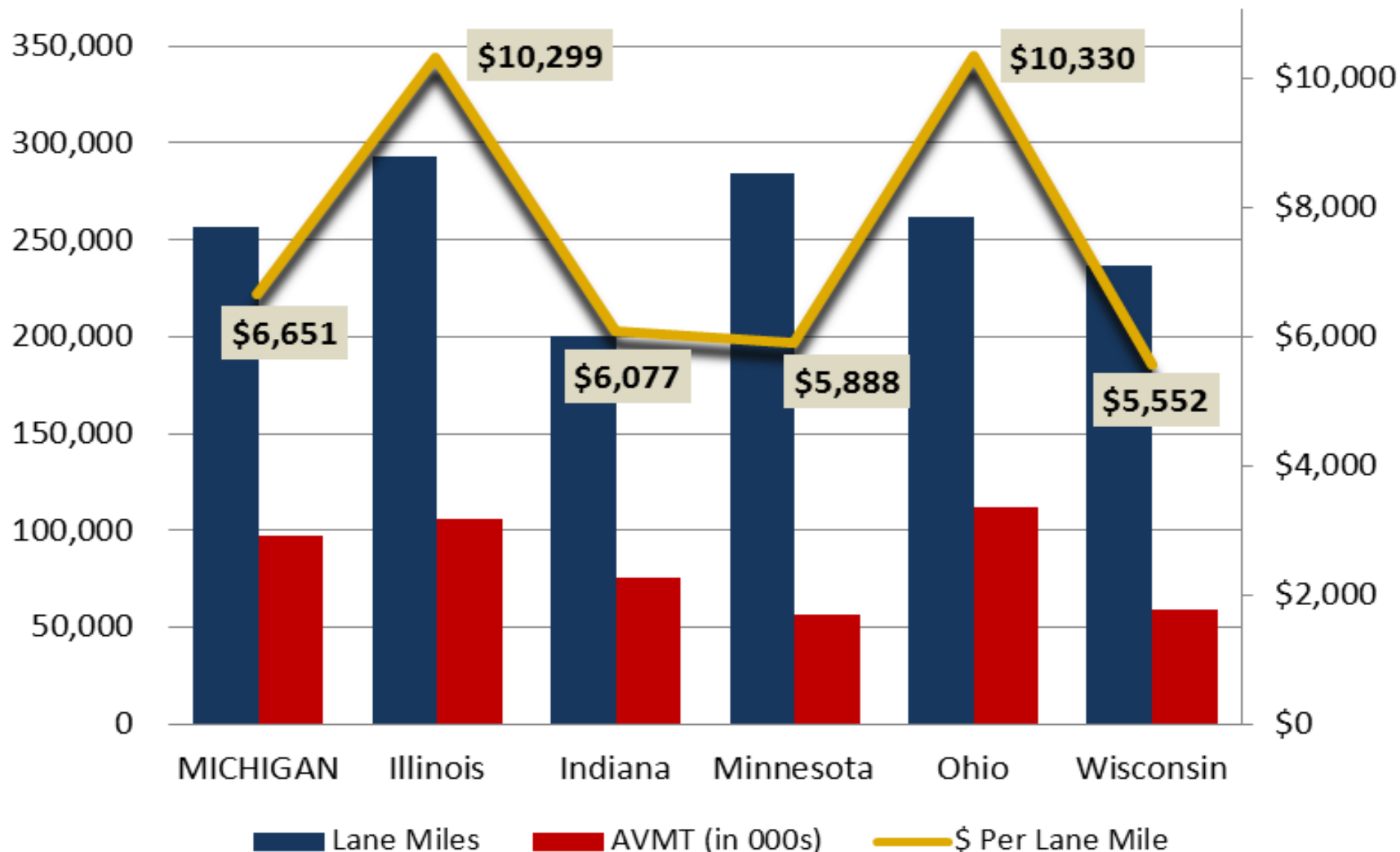
Every other state invests more per person than Michigan



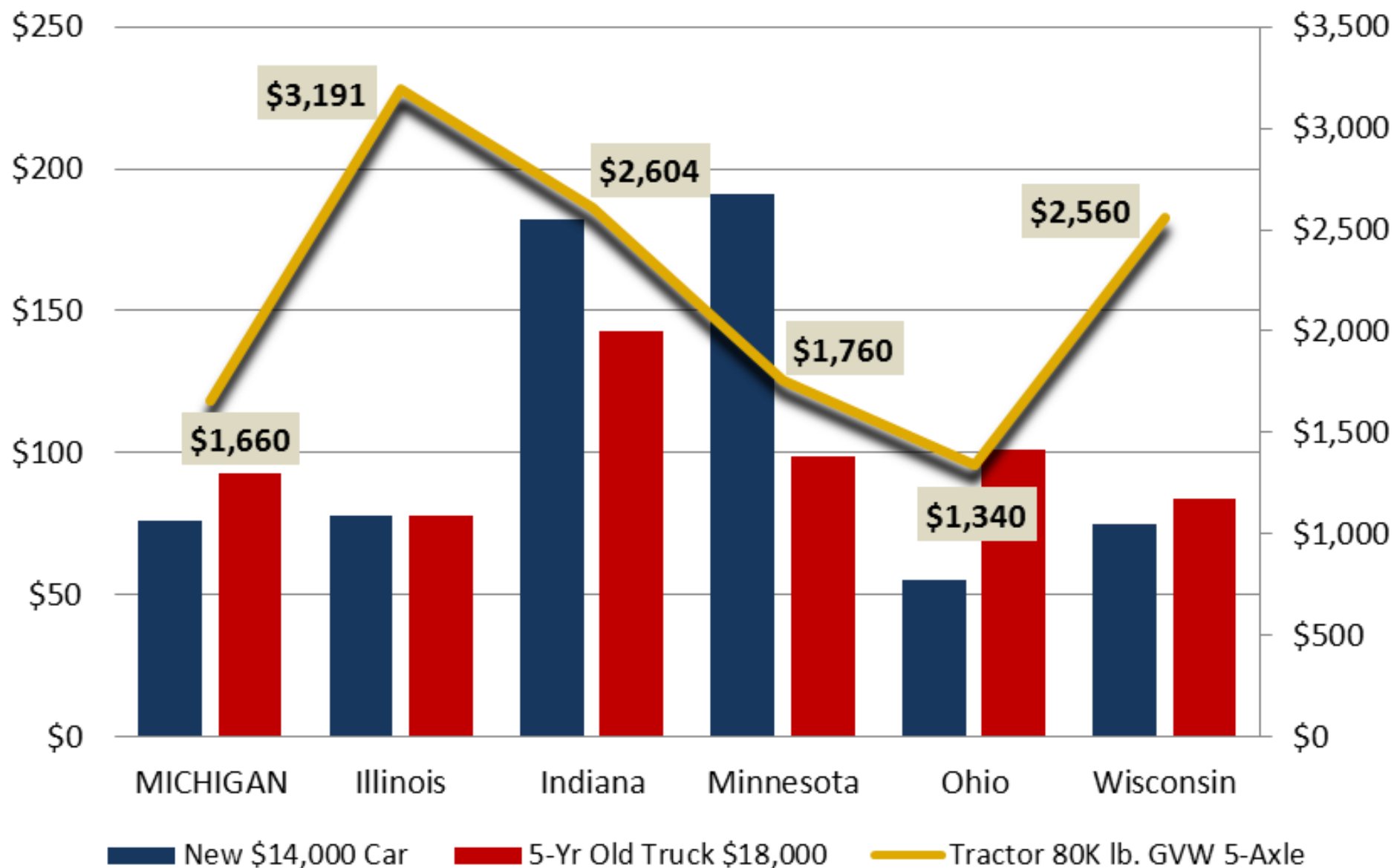


## System Size, Traffic, & Dollars Invested

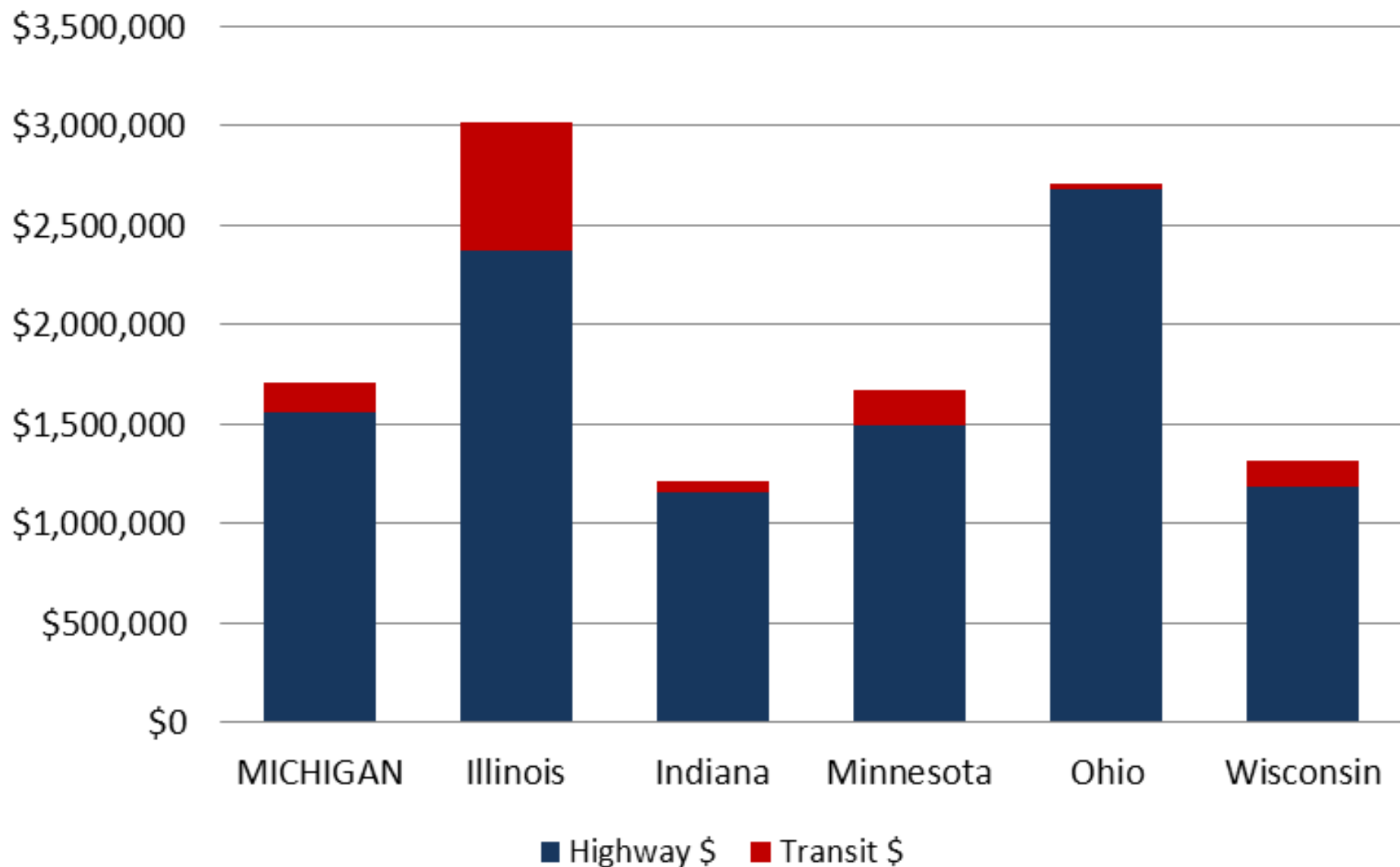
MI system size & traffic are like OH and IL, but fewer dollars are invested per lane



## Sample State Vehicle Registration Fees

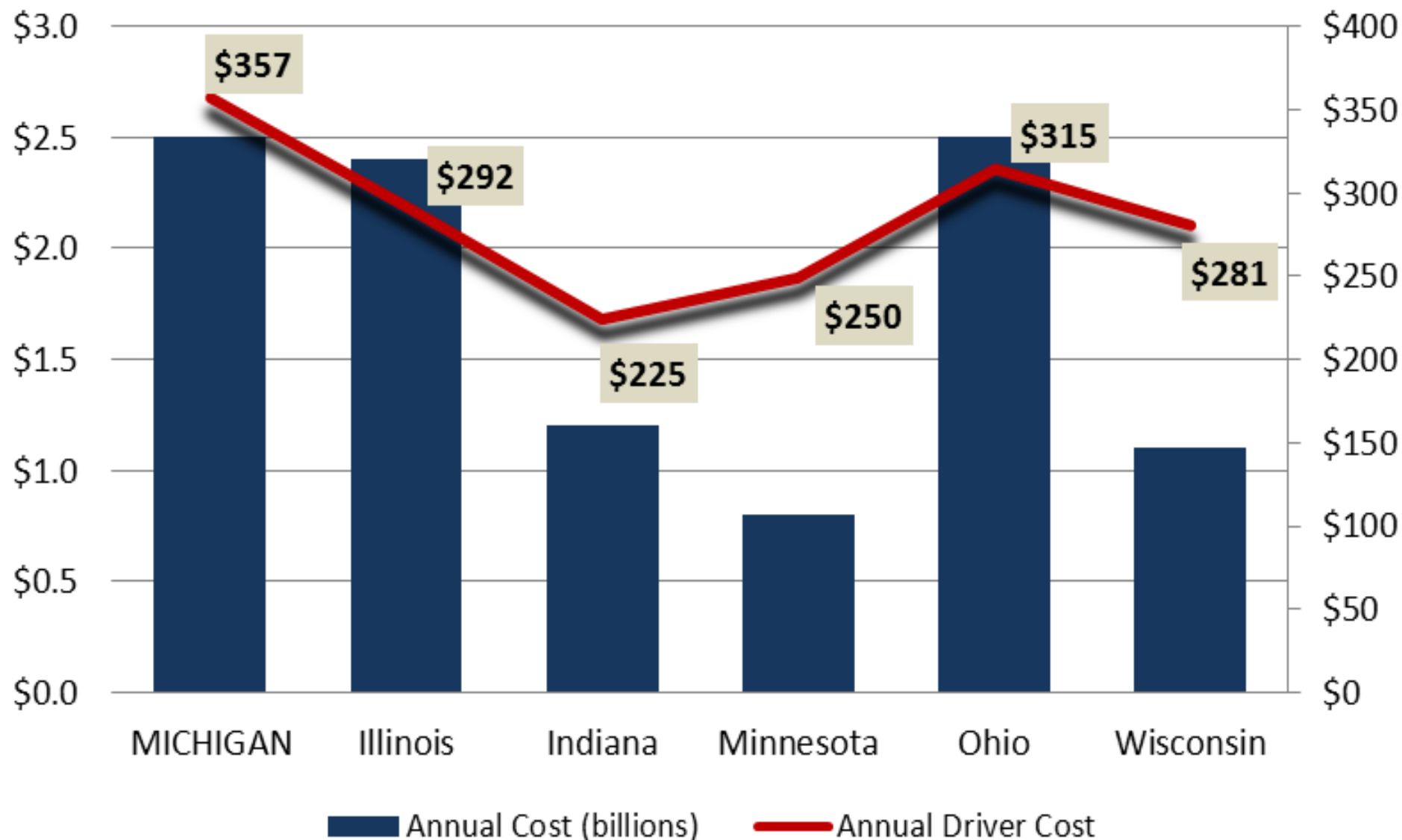


## State Transportation Investment Allocation (thousands)

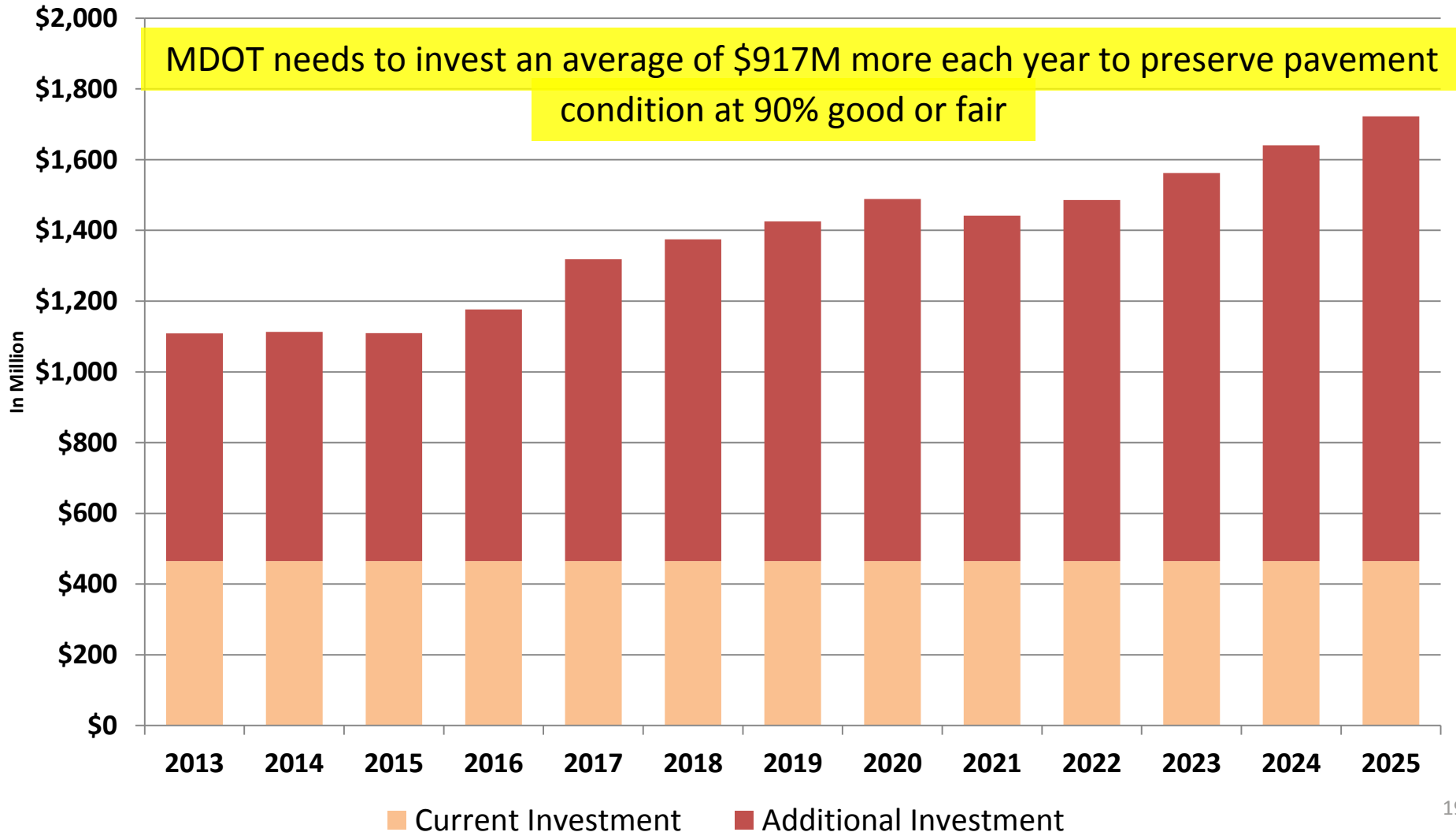




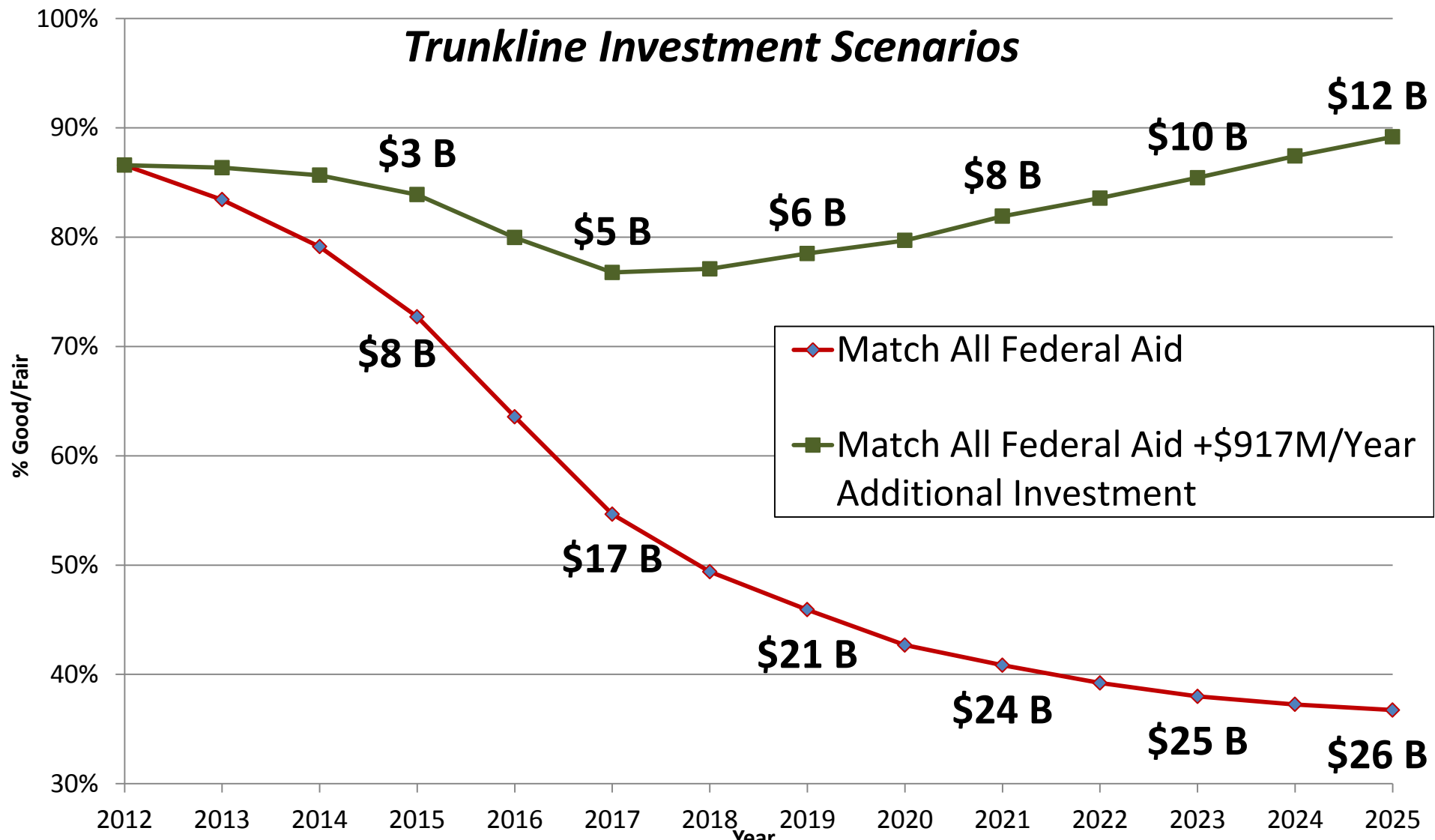
## State Comparison of Vehicle Repair Costs



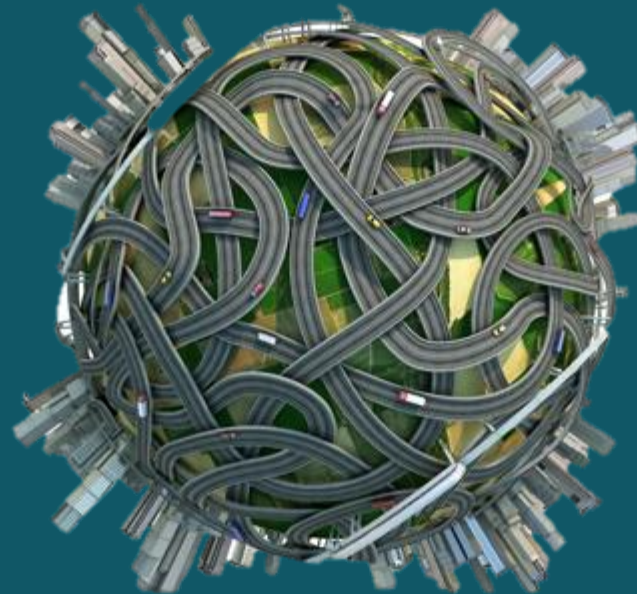
# MDOT Shortfall for Pavement Preservation



# Pay Now or Pay Later







# Questions?



Customer Service is Important  
Please take our customer survey:

[www.mi.gov/mdot](http://www.mi.gov/mdot)

